

NOTHE FORT

NAPOLEONIC FORT, WEYMOUTH, DORSET



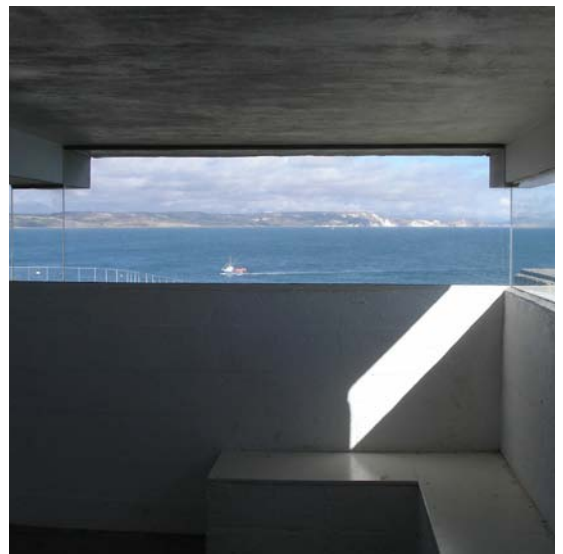
1



2



3



4



5



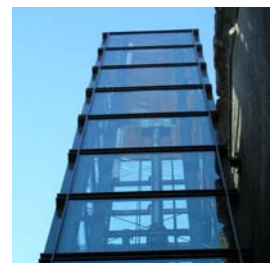
6



7



8



9

A comprehensive repair of the coastal fort at the mouth to Weymouth harbour, and its conversion into a Museum of Coastal Defences.

Involvement started with a condition survey, conservation plan and feasibility study for the development of the fort as a museum, through to completion of the building works on site. This included the complete reconstruction of the earth

ramparts, waterproofing of the gun deck and underground magazines, a new glass lift and shop.

Client: The Weymouth Civic Society
 Contractor: R G Spiller Ltd
 Date: 1998 - 2007
 Value: £1,700,000
 Award: RIBA Wessex South West Town & Country Design Award 2008

- 1 Central parade ground
- 2 Lift & observation post
- 3 Seaward earth ramparts
- 4 Observation post view
- 5 Aerial view of Nothe Fort
- 6 Lift
- 7 Museum
- 8 Gun emplacement
- 9 Glass lift