

STOVER SCHOOL SCIENCE BUILDING

SCIENCE LABORATORIES & CLASSROOMS, STOVER SCHOOL, NEWTON ABBOT, DEVON



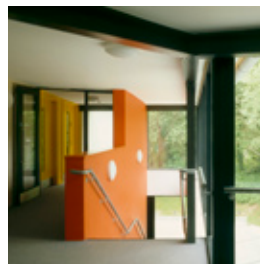
1



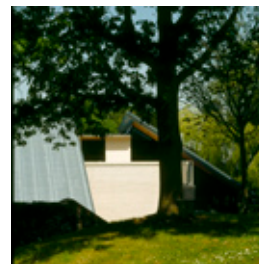
2



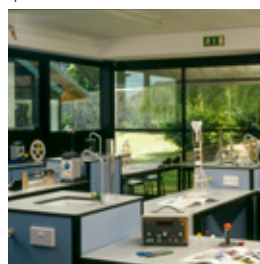
3



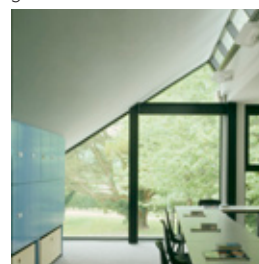
4



5



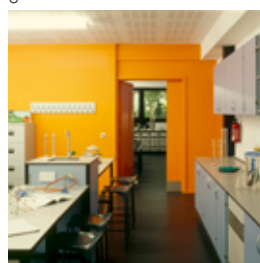
6



7



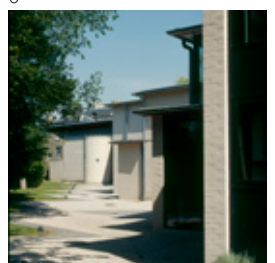
8



9



10



11

The science building is the second in a chain of new facilities for Stover School, that link the two main 18th c. buildings on the site through the old kitchen garden, in a listed landscape.

The two wings of the building contain 4 classrooms and 4 laboratories, which were designed for multiple worktop layouts and flexibility.

Client: Stover School
 Contractor: CS Williams Ltd
 Date: 2005
 Value: £ 930,000

- 1 View from the parkland
- 2 Fragmented form of the end gable
- 3 Informal roof scape
- 4 Upper foyer
- 5 Central terrace
- 6 Physics laboratory
- 7 First floor classroom
- 8 Garden elevation detail
- 9 Chemistry laboratory
- 10 Central entrance
- 11 Stepped north roofs