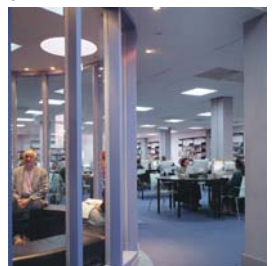
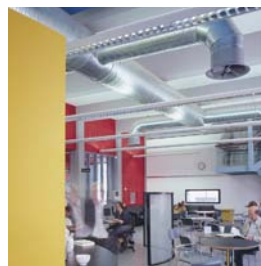
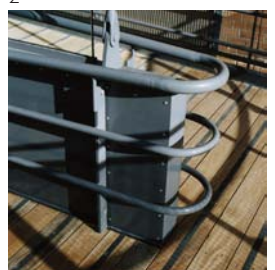
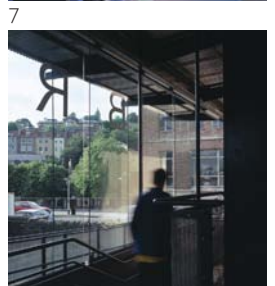


# CENTRAL LIBRARY

COLLEGE GREEN, BRISTOL



4 The Bristol Central Library was upgraded with a new entrance and access ramp, a new computer facility for the public, and a thorough rationalisation of the internal layout. Changes were concentrated into the 1960's extension to allow the original Holden Library to be retained as originally designed.



8 the proposal through the many agencies connected with the management of the library.

Client: Bristol City Council  
 Contractor: E R Hemmings Ltd  
 Date: 2001  
 Value: £ 500,000  
 Award: Civic Trust Mention 2002

- 9
- 1 New suspended access ramp
- 2 Glass and steel spine wall to the ramp
- 3 Handrail
- 4 Library wing & ramp
- 5 Cafe
- 6 Transparent fire lobby
- 7 Transparent fire resistant lift lobby & new IT area
- 8 Cafe
- 9 Exit ont ramp

The project required careful consideration to carry